

PENNSYLVANIA ANGUS ASSOCIATION

CELEBRATING OVER 60 YEARS AS AN ASSOCIATION

www.paangus.org

March, 2016

INSIDE THIS ISSUE :

***IT IS NOT TOO LATE TO JOIN US - SEND
YOUR DUES NOW.***

***NEWS! EASTERN REGIONAL 2016 - JUNIOR
NEWS!***

***ANGUS ON PARADE SALE CONSIGNMENT
INFO!!!***

BREEDERS' SHOW ENTRY INFO - DUE JUNE 20





Thursday, June 16

8 a.m.

Facilities Set-Up
Begin Receiving Cattle

All Day

Hoss's Community Fundraiser -
Hoss's Steak & Sea- Enola, PA

20% of all Proceeds will be split between the PA Special Olympics and the 2017 ERJAS

Friday, June 17

9 a.m. - 11 a.m.

Check-In Entries
Sign-up for Skill-A-Thon
DEADLINE: 11:00 a.m.

TBA

Hospitality

10:30 a.m.

Royalty Brunch - *Farm Show Banquet Hall*

1 p.m.

Opening Ceremonies - *Equine Arena*

2:30 p.m.

Showmanship (Senior, Intermediate, Junior, Novice, Pee-Wee)

Judges: Chris Mackey & Devin Cunningham

All Day

Hoss's Community Fundraiser - Hoss's Steak & Sea- Enola, PA

20% of all Proceeds will be split between the PA Special Olympics and the 2017 ERJAS

Saturday, June 18

8 a.m.

Begin Show - *Equine Area*

Judge: Jonathan Perry

Steers

Cow/Calf Pairs

Bred & Owned Bulls

Bred & Owned Heifers

TBA

Hospitality

10 a.m. - 2 p.m.

Skill-A-Thon - *Hospitality*

11:30 a.m. - 1 p.m.

Lunch

2 p.m.

Final Dodgeball Sign-up - *Hospitality*

2:30 p.m.

Educational Speaker- Embryology - Dr. Jim Evans- *Hospitality*

5:30 p.m. - 7 p.m.

Dinner

7 p.m.

Dodgeball Tornatment & Barnyard Olympics - *Large Arena*

Sunday, June 19

7 a.m. - 8:30 a.m.

Breakfast

8:15 a.m.

Devotional - *Equine Arena*

9 a.m.

Resume Show

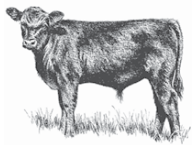
Owned Heifers

State Groups

TBA

Hospitality

(5) \$5 Meal vouchers will be provided at check-in to each exhibior to assist in covering additional meal expenses for the exhbior and their families. Meal vouchers may be used at any time at the onsite consession stands.



JUNIOR ROUNDUP

2016 Officer Team

PA Junior Angus Association

President, Matthew Mitchell
Vice-President, Alexis Cash
Secretary, Madison Weaver
Assistant Secretary, Cailey Dahlquist
Treasurer, Daniel Rohrbaugh
News Reporter, F. Hayden Weaver
Directors- (1 year term) Kyle Livingston, Hunter Voight, Hailey Sweitzer, James Voight
Directors- (2 year term) Jade Zimmerman, Sam Parr, Justin Werner, Jacob Werner.



The Pennsylvania Angus Juniors wish to sincerely thank all of the Breeders, Parents and Donors for your support in preparing for the 2016 Eastern Regional Junior Angus Show. Without your instrumental support over the years these incredible opportunities for our juniors would not be possible- Thank You!

First call for consignments for the AOP Sale The 2016 Angus On Parade Sale will include the option to sell your cattle on video or during the traditional sale. The sale will be held Sat. Oct 1st, 2016 in the small arena of the PA Farm Show Complex during the Keystone International Livestock Expo.

**Mail, Email, or Text
 Sale Managed By: Ken Brubaker
 5815 N Valley Pike Harrisonburg, VA 22802
 Email : ken@brubakersales.com
 Phone or Text : 540/908/5799**

Name _____
 Farm _____
 Address _____
 Town _____ State _____ Zip _____
 Phone _____ Cell _____
 Email _____

**Live Cattle Consignment (Circle)
 Cow/Calf Pair - Open Heifer - Bred Heifer
 Embryos - Pregnancy - Flush**

**Video Consignment (Circle) Cow/Calf Pair -
 Open Heifer - Bred Heifer Embryos -
 Pregnancy - Flush**



Join the PA Angus Juniors at Hoss's

Thursday June 16, 2016
 Present event number: #37679
 Enola, Hummelstown

Friday, June 17, 2016
 Present event number: # 37680
 Enola, Hummelstown, Grove City,
 West York, Leesport

to support the
PA Special Olympics and the 2017 Eastern Regional Junior Angus Show.

The PA Special Olympics has been selected as part of the community service project during the ERJAS.

Reserve your **Angus-Opoly Game Set & Angus Cookbooks** today to pick up at the 2016 ERJAS in Harrisburg, PA June 17-19 or PA Angus Breeders' Show July 14-16. **Angus-Opoly Games** are \$25 and **Angus Cookbooks** are \$10. Contact Kate Livingston Contact Kate Livingston to place orders kml5484@gmail.com or 717-339-9959.

Additional hands would be appreciated throughout the Eastern Regional Show weekend. Specific help will be needed to welcome incoming guests, prepare the ring daily, maintaining the hospitality area and assisting with the Saturday Evening Social - Dodgeball Tournament and Barnyard Olympics. If you would like to help out, please contact Kate Livingston- kml5484@gmail.com or 717-339-9959.



Message from our President

Greetings,

I hope this note finds everyone doing well and having a good start to spring. The season started out on the dry side but with some recent rains, hay now seems to be growing, just need a little warmth and sunshine

Our latest Finest Female Sale took place on March 25th and was another success. Our total was at the \$104,000.00 mark with a lot average at \$3400.00. I want to thank all the consignors, buyers and everyone who helped in the office and the barn for the sale to help make this a success. I again want to thank Tom Burke and all of his staff for all their work in putting this sale together.

Now is the time to start thinking about our Angus on Parade Sale to be held in October. We are looking for consignments and appreciate your participation to support your Association.

Our Juniors have been very busy planning for this year's Eastern Regional Junior Show to be held June 16th thru the 19th in Harrisburg. The final details are under way and they are looking forward to meeting and greeting everyone at the farm show complex for a great weekend of activities. On behalf of our Juniors, I would like to thank everyone for supporting them with your donations and talents. Please come out next month and enjoy the show and assist where you can and also to thank the Juniors for all of their hard work.

They are also getting ready for the summer shows including the NJAS in Nebraska this July. We offer them best wishes as they travel and show and represent Pennsylvania to the finest!

Finally, as I write this, I want to extend my wishes to you all for to have a great spring and I look forward to visiting with you soon.

Sincerely,
Gene Trowbridge
President

**2016 PA ANGUS ASSOCIATION
OFFICERS AND DIRECTORS**

President

Gene Trowbridge
6290 SR 3001 Meshoppen, PA 18630
570-833-4482
geneval@epix.net

Vice-President

Wendall Landis
2785 Tadpole Rd. PA Furnace, PA 16865
814-692-7759
wlandispsu@gmail.com

Secretary

Jamie Brozman
354 Township Line Rd. Nazareth, PA 18064
Phone: 484-221-3455
justenuffangus@gmail.com

Treasurer

Brad Bishard
1787 Seven Valleys Rd. York, PA 17408
Phone: 717-792-9268
bradbishard@hotmail.com

Directors

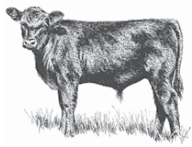
Dale Rains	Dennis Byrne
Gene Nolt	Deric Horting
Steve Upperman	Del Voight
John Nichols	Mindy Seese
Tim Livingston	Kyle Grim
Chad Cash	Greg Mckean

Advertising Rates

Full Page	\$100.00
½ Page	\$75.00
Business Card	\$100.00/year
E-blast	\$25.00

**Next Deadline 7/1/16 to place advertising,
submit news, or an editorial comment contact:**

Jamie Brozman – 484-221-3455
justenuffangus@gmail.com



SAVE THE DATE

Breeders' Show - July 14-16, 2016

Huntingdon County Fairgrounds,
Huntingdon, PA

2016 committee:

Sue Mayle, Lori Voight, Sam Long

Blocks of rooms at the following hotels

Comfort Inn (814) 643-1600 - \$95/Night.

Huntingdon Motor Lodge - (814) 643-1133 - \$75/Night.

Fairfield Inn (814) 643-3672 - \$119/Night.

Sponsors needed to help make the show a huge success!

Sponsor levels from \$1-99, \$100-249, \$250-499, \$500-999, \$1000 plus.

The committee is asking that all vendors send in a sponsorship to get your business recognized!

Send to: PA Angus Association,

Jamie Brozman Secretary; 354 Township Line Rd.
Nazareth, PA 18064

Duck Derby

Rubber duck 1-200 will be sold for \$5 each - Only 200 ducks will be sold. Contact Sam Long for more info.
717-940-1103



Board Meeting

7/16/2016

PA ANGUS BOARD OF DIRECTORS MEETING IMMEDIATELY FOLLOWING THE CONCLUSION OF THE HEIFER SHOW, (Approximately 11:00-11:30 a.m.) AT THE HUNTINGDON CO FAIR GROUNDS, HUNTINGDON, PA.

SEE YOU ON THE BLEACHERS.

2016 Calendar of Events

June 16-19	Eastern Regional Junior Angus Show, Harrisburg, PA
July 3-9	National Junior Angus Show, Grand Island, Nebraska
July 14-16	PA Angus Breeders Show, Huntingdon Co Fairgrounds, Huntingdon, PA a
Aug 16-18	Ag Progress Days, Rock Springs, PA
Sept 30 Oct 1-2	Keystone International Livestock Expo/Angus on Parade Sale, Farm Show Complex, Harrisburg, PA
Oct 1	Angus on Parade Sale, Farm Show Complex, Harrisburg, PA
Dec	Renew your dues
Jan 6-14	101st PA Farm Show, Farm Show Complex, Harrisburg, PA



4/23/16 a Saturday at the Farm Show was PA Flavors. Sysco CPA supports the event extensively including with a booth to promote Certified Angus Beef, local CAB licensees and the PA Angus Association. Again this year Dennis and Dottie Byrne in addition to their daughter Rebecca and son-in-law Jacob Yohe came out to support the booth.

REG# +16985311

BCA Flawless 119

CATTLE *Visions*



Kyle Grim – (717) 324-9869



Billy Work – (724) 880-9479



Donor Dam with a great udder and fleshing ability. Pictured at 6 years!

Lude

TC Aberdeen X TC Freedom X Rito 9FB3 Fullback

BW	WW	YW	Milk	Marb	REA	\$B
-0.9	+44	+83	+26	-.01	+.98	+125.43

-PROVEN CALVING EASE!!!
-Adds BALANCE & STYLE!!!

- Backed by the FAMOUS SCAARA COW
- OUTCROSS Pedigree!!!
- NO First Class, Brilliance
- NO Lutton, Saugahatchee
- Incredible MUSCLE SHAPE
- Great FOOT SHAPE

Semen \$25

Cert. \$35



HAF FOREVER FLAWLESS 142

Class Winner National Junior Angus Show 2015



BEAVER CREEK SCAARA 474

Res. Div. Champ. PA Breeders Show



BEAVER CREEK SCAARA 474

Res. Champ. PA Breeder's Show



BEAVER CREEK FLAWLESS D517

Reserve Division MAJAC



BEAVER CREEK FLAWLESS 345

Class Winner MAJAC

2016 BUYER'S LIST

Pennsylvania Livestock Evaluation Center

PA'S 43rd PERFORMANCE TESTED BULL SALE

85 Bulls - \$ 315,300 - to Average \$3709.41

55	Angus	\$200,100.00	Avg.	\$3,638.00	Top Selling Lot# 34
5	Red Angus	\$20,200.00	Avg.	\$4,040.00	Top Selling Lot# 56
13	Simmentals	\$48,600.00	Avg.	\$3,738.00	Top Selling Lot# 74
8	Herefords	\$30,300.00	Avg.	\$3,788.00	Top Selling Lot# 63
1	Charolais	\$2,300.00	Avg.	\$2,300.00	Top Selling Lot# 84
3	SimAngus	\$13,800.00	Avg.	\$4,600.00	Top Selling Lot# 85

<u>LOT #</u>	<u>Breed</u>	<u>SELLER</u>	<u>BUYER</u>	<u>PRICE</u>
1	Angus	Seefeldt Angus, Jordan Seefeldt	Port Allegany, PA. 814-331-8174/ ghseefeldt@mcke ancountypa.org	TINA L HESS 52 MILL CREEK LANE, WESTFIELD, PA 16950 \$ 4,100.00
2	Angus	Kohr Farms, Alexis Cash	York, PA- 717-779- 0614/ chadcash2@comc ast.net	PAUL KERR 1049 BALLYUNION RD, STATE, COLLEGE, PA 16801 \$ 4,800.00
3	Angus	Kerr Cattle Co., Mike and Paula Kerr	Clearfield, PA- 814- 590-9603- kerrcattleco@gma il.com	MICHAEL FAVALORO 2142 CARTER SLOCUM, MARATHON, NY \$ 4,100.00
4	Angus	Cash Family Angus, Grant Cash	York, PA- 717-779- 0614/ chadcash2@comc ast.net	EUGENE WENGERT 722 LOUDON RD, ST THOMAS, PA 17252 \$ 4,000.00
5	Angus	Cash Family Angus, Alexis Cash	York, PA- 717-779- 0614/ chadcash2@comc ast.net	DENVER CRAMER 12727 MTN SHADOWS LN, SHADE GAP, PA \$ 4,600.00
6	Angus	Slayton's BearDance, Paul & Bette Slayton	Bedford, PA- 814- 623-0772/ paul@slaytonsbe ardance.com	LARRY MILLER E 345 CHURCH RD, EAST BERLIN, PA \$ 3,900.00
7	Angus	Hawthorn Valley Farm, Jesse Alspaugh	Richland, PA - 717- 821-2597/ agland@comcast. net	WES MILLER 6849 COUNTY ROAD K, QUINTER, KS \$ 3,400.00
8	Angus	Oak Grove Angus, Kachine A. Dixon	Frenchtown, NJ- 908-752-9066- oakgroveangusfar ms@yahoo.com	LARRY MILLER E 345 CHURCH RD, EAST BERLIN, PA \$ 3,800.00
9	Angus	Mountain Edge Farm, Ed and Ryan Dunkleberger	Centre Hall, PA- 814-466-7074- mountainedgefar m@yahoo.com	BRIAN FACKLER 708 KINGS HWY, SALEM, NJ 08079 \$ 3,300.00
10	Angus	Hawthorn Valley Farm, Jesse Alspaugh	Richland, PA - 717- 821-2597/ agland@comcast. net	CHARLES HOMAN W 184 BEAVER DAM RD, SPRING MILLS, PA 16875 \$ 4,000.00
11	Angus	JK Cattle Co., Jim & Jolene Kuhn	Conneautville, PA. 605-450-0482- jkcattle123@yaho o.com	NELSON LEE TALLEY 8592 MATH RD, STANFIELD, NC \$ 3,700.00



LEAD Conference: Leaders Rise Up in Phoenix **Early registration deadline for junior members is June 15.**

The Leaders Engaged in Angus Development (LEAD) conference is set to take place Aug. 4-7 in Phoenix, Ariz. The 2016 event is themed “Rising Up in Phoenix” and is designed for National Junior Angus Association (NJAA) members 14 to 21 years of age.

Junior Angus members will travel across the nation to experience local agriculture and will partake in leadership workshops put on by the National Junior Angus Board (NJAB). According to NJAB Leadership Director Lauren Grimes, LEAD is an opportunity to leave the cattle at home, grow as a leader and build relationships with peers.

“Attending LEAD is a great opportunity to wrap up the summer show season and spend time with your friends from all parts of the United States, while learning how to become a better leader, communicator and advocate of agriculture,” Grimes says. “For the first time in LEAD history, we are traveling to the southwest to see forms of agriculture we have never seen before, listen to speakers discuss prominent issues in our industry and participate in teambuilding activities.” Angus juniors will have the opportunity to hear from professionals Robin Kleine from Focus Marketing Group, Certified Angus Beef Chef Ashley Pado and Kelli Retallick from Angus Genetics Inc. (AGI).

Tours during this year’s LEAD conference will give attendees a look at agriculture in the southwest. Tour stops include Arid Zone Trees, a local landscape nursery; Pinal Feeding Co. Inc., one of the largest cattle feeding operations in the southwest; and Danzeisen Dairy, a local dairy focusing on providing fresh farm milk to local grocers.

In addition, junior members will participate in numerous breakout sessions regarding agricultural careers and also visit the western-style tourist town of Rawhide in Chandler, Ariz.

“This conference is a great way to kick back and relax away from home for a few days, all while advancing our knowledge of the beef industry, and networking with juniors and adults from all walks of life from all over the country,” Grimes says.

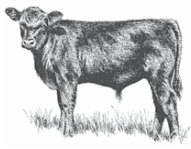
Conference space is limited and early registration is encouraged by the June 15 deadline. The early registration fee for NJAA members is \$250. After June 15, registration will be \$275 and accepted based on space availability. Registration for adults, state advisors and chaperones is \$300; no early registration deadline applies. Sign up online at www.angus.org/njaa.

LEAD Scholarship Opportunities

First or second-time LEAD attendees may consider applying for the Gary M. Stoller Jump Start Your LEADership Award, which helps provide financial assistance with LEAD travel expenses. Interested applicants must submit a one-page typed essay expressing why the LEAD conference is important, what they hope to gain by participating, and the extent of their financial needs. For more information, visit www.angus.org.

In honor of his dedication to the Angus breed, family of the late Stan Prox, Macomb, Ill., have created the Stan Prox Memorial LEADers Engaged in Angus Development (LEAD) Award. Contributions from friends and family in his honor will award one NJAA member with funds necessary to defray registration costs to attend the LEAD conference.

The recipient will be selected by random drawing from those Illinois youth who registered for the LEAD conference by the early registration deadline. If individual is already receiving funding through the Angus Foundation for this purpose, another name will be drawn. — *Written by JD Rosman, Angus Media*



How BQA could help grow relationships with consumers

May 23, 2016 by [Amanda Radke](#) in [BEEF Daily RSS](#)

Today's consumer cares about beef quality, taste, nutrition, and safety. They also care about animal welfare, antibiotic use, and the health of the animal. Here is how the Beef Quality Assurance program helps to address these consumer concerns.

In all of the consumer conversations and media outcry about antibiotic use, animal welfare and the humane treatment of animals, the quiet and often unheard voice of beef producers has one story that isn't being told enough. That story is of the [Beef Quality Assurance \(BQA\) program](#), a checkoff funded certification program that offers training to producers, so they can ensure a safe, high quality beef product for consumers to enjoy.

BQA encompasses every aspect of the beef cattle industry including cow-calf, stocker, feedlot, and even dairy, and the BQA certification modules include information on proper animal handling, administration of vaccines and how to eliminate injection-site lesions, low-stress cattle handling, and other management practices that ultimately determine the quality and safety of the beef we love.

[BQA is a voluntary program](#), and it's often up to state beef councils to reach out to ranchers, auction market owners, dairy employees, and other industry professionals and train them on these best management practices.

Getting certified is one of those things that can be easy to put on the back burner; however, having that BQA certification and talking about it with our consumers shows our customer base that producers take these issues seriously. Having these discussions with our consumers not only shows the industry's dedication to producing a safe beef product, but it could possibly deter future regulations that force ranchers to follow certain guidelines, as well. After all, it's easier to do things voluntarily because it's the right thing to do vs. having Washington, D.C. tell you how things need to be done.

I recently read that nearly 2,000 producers became BQA certified from January-April 2015, thanks, in part, to a free-certification opportunity supported by Boehringer Ingelheim Vetmedica, Inc. (BIVI). Through the free certification, producer participation jumped up to 65%, and this was made possible through a BIVI sponsorship of the Beef Cattle Institute, which develops the modules for the certification courses.

If you aren't [BQA-certified](#) yet, I highly encourage you to take this step and get certified. It may seem like a small thing in the grand scheme of things, but this is one of those programs that speaks volumes to our consumers about how the beef industry views hot button issues such as antibiotic use. Get certified and spread the word about how you are committed to raising quality beef in your segment of the industry. To learn more about BQA certification and available state or online trainings, check out www.bqa.org.

The opinions of Amanda Radke are not necessarily those of beefmagazine.com or Penton Agriculture.



Dear Angus Breeder,

I hope you've been having a great spring and been fortunate to receive some rain over the last few days. The spring sale season is nearing an end in May, but there are still a lot of great opportunities to purchase a bull or add elite females to your herd. I've seen many of these bulls/females, will see more this week and can attest to the quality of cattle remaining to be sold. Please check out the regional calendar below or to view the complete Angus calendar, go online to www.angus.org.

Genomic Calibration

Last month, you may have noticed slight changes in some of the EPDs. This occurred following Angus Genetics Inc.'s (AGI) release of its fifth calibration of genomic-enhanced expected progeny differences (GE-EPDs) on April 8. This process further refines how DNA test results are incorporated with pedigree, performance measures and progeny data into the selection tools released weekly.

Calibration allows AGI to update the equations used to incorporate genomic test results into GE-EPDs. As AGI receives new DNA test results, as well as new data on tested animals, it allows both AGI and Zoetis to further train the models used to generate GE-EPDs. The result is increased accuracy of genomic predictions for animals within the Association's growing database.

When GE-EPDs were first introduced in 2010, the equations used to derive them involved genotypes of just more than 2,200 animals. In 2012, when the process was conducted again, that number increased to more than 11,700; then again in 2013 to more than 38,000; and more than 57,000 in 2014. This latest calibration, Calibration 5, used the genotypes of more than 108,000 animals in the training population, a nearly 88% increase from the previous calibration.

As the process evolves and Angus breeders successively record additional genomic and phenotypic measures, AGI is able to refine GE-EPDs to add accuracy and allow for more powerful genetic predictions on animals. For the vast majority of animals, producers likely didn't notice any significant shifts in GE-EPD values. The heifer pregnancy (HP EPD) may show slightly more change than other traits, given more available data than previous calibrations. The number of animals with phenotypic and genomic data for HP nearly doubled since the last calibration.

It should be noted that the economic assumptions for the \$Values did not change in April with the calibration. Economic assumptions, such as carcass grid prices and annual cow costs, are updated annually in July, a format which began in 2015.

National Junior Angus Show

I'd like to remind anyone planning to attend the 2016 National Junior Angus Show (NJAS) in Grand Island, Neb., that the ownership and entry deadline is Sunday, May 15. We are anticipating another fantastic junior nationals this year, with more than 1,000 head of registered-Angus cattle competing. Not to mention, some of the most impressive junior leaders in the agriculture business. You can read more about the [2016 NJAS online](#). If you have any questions or need more information, please let me know.

I look forward to seeing you at the remaining May sales and summer shows. As always, please do not hesitate to contact me if you have any questions or need assistance.

Take care,

Chris Jeffcoat

Regional Manager - DE, MD, ME, NH, VT, MA, RI, CT, NJ, NY, PA, VA, WV and NC
282 Saint Lukes Rd.
Littlestown, PA 17340
Mobile: [717.476.1496](tel:717.476.1496)



American Angus Association
3201 Frederick Ave.
St. Joseph, MO 64506
[816.383.5100](tel:816.383.5100)
www.ANGUS.org



Regional Angus Calendar:

06/17/16 - 06/19/16: Eastern Regional Jr. Angus Show - Harrisburg, PA

2016 PENNSYLVANIA ANGUS BREEDERS' SHOW SCHEDULE

Huntingdon County Fairgrounds, Huntingdon, PA
July 14, 15 and 16, 2016

MASTER OF CEREMONIES: HARRY BACHMAN
SHOW COMMITTEE: SUE MAYLE, LORI VOIGHT, SAM LONG

THURSDAY, JULY 14th

- 12:30 p.m. Begin weighing steers
- 1:00 p.m. All cattle must be checked in
- 3:00 p.m. Junior Showmanship Contest: **Judge: Clyde Cranwell, Eaton, NY**
5 divisions including a peewee division—all animals shown unfitted
- 6:00 p.m. Angus Judging Contest—fun for the whole family
- Evening Hoss's Night – Fundraiser for PA Junior Angus

FRIDAY, JULY 15th JUNIOR SHOW JUDGE: Clyde Cranwell, Eaton, NY

- 8:30 a.m. Junior Owned Cow/Calf class, calf must be bred by Junior
Bred and Owned Bull show (follows cow/calf)
Junior Registered Angus Steer Show
Junior Association Meeting
- 11:00 a.m. Begin Serving Lunch
- 1:00 p.m. Bred and Owned heifer show
Spotlight Heifer Show (heifers purchased from the 14, 15, 16 Finest Female Sale or
Angus on Parade Sale)
Owned Heifer Show
- 4:00 p.m. Duck Derby – Fundraiser for PA Angus Auxiliary
- 4:15 p.m. Fun for Future Angus Breeders (ages 3-12): Scavenger Hunt and Games
- 5:30 p.m. **FABULOUS - ROAST BEEF**, Filling, Mashed Potatoes, Green Beans, Fruit Salad &
Dinner Roll \$15 Adults, \$8 kids (age 12 & under); **PREPAID by 6/20/16**
- 6:30 p.m. Educational Program: Del Voight, Pasture Management

SATURDAY, JULY 16th OPEN SHOW JUDGE: David Roper, Blacksburg, VA

- 8:30 a.m. Cow/Calf classes
Open Heifer Show
Awards throughout the day: Golden Pitchfork; Conrad Grove Memorial Award
- 11:00 a.m. Begin Serving Lunch
- 11:30 a.m. (or conclusion of show) Board of Directors' Meeting; Auxiliary meeting
- 12:55 p.m. Sponsor recognition
- 1:00 p.m. Fun Auction—bring your items to donate
- 2:30 p.m. Bull Show

ALL CATTLE RELEASED UPON COMPLETION OF THE SHOW

***Don't forget to send your sponsorship, without you the Breeders' show
wouldn't be a success!***

PA ANGUS ASSOCIATION BREEDERS' SHOW ENTRY AND SPONSORSHIP FORM

Please mail along with entry fee and sponsorship donation by June 20, 2016

NAME _____

DIAMOND (\$1000), GOLD (\$500), SILVER (\$250), BRONZE (\$100)
OR BLUE RIBBON SPONSOR (\$99-1) Total \$ _____

Cow/Calf pairs Number _____ x \$45 Total \$ _____

Both Junior and Open Show Entries: Number _____ x \$30 Total \$ _____

Junior Show Only Number _____ x \$20 Total \$ _____

Open Show Only Number _____ x \$30 Total \$ _____

Friday Night Roast Beef Dinner at the fairgrounds. All meals need to be prepaid.

Number Attending _____ adults \$15 _____ kids \$8 (ages 12 and under)

Total \$ _____

Entries must be paid in full for the committee to reserve your stall space!

TOTAL CHECK ENCLOSED

\$ _____

I would like to volunteer to help in the following areas: *Show ring, cattle check in, picture set up area, food, judging contest, junior activities, maintenance, pooper scooper, other* _____

**Please make check payable to PA Angus Association and mail by June 20th to:
Jamie Brozman, 354 Townshipline Rd., Nazareth, PA 18064**

HOW YOU CAN BE OF HELP AT THE BREEDERS SHOW!!

The Breeders Show is certainly one of the high points of the Angus year. You exhibit your cattle, renew old friendships, make new ones, spend quality time with your family, eat great food and participate in the fun auction and judging contests.

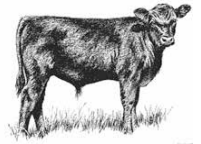
The Breeders Show takes a lot of money to operate. It also takes a lot of volunteers. We hope you will consider contributing in order to ensure the continued success of the show. We have many new members who may not understand the total picture regarding the financing of this show. While we receive some funding from the State, money also comes from entry fees and some from the generous contributions of our members. Sponsorships are available in the categories listed above. Please consider where you can help. You will be recognized throughout the three-day event!

**ALL SPONSORS RECEIVE A SPONSOR NAME BADGE; RECOGNITION IN THE
SHOW**

**CATALOG AND NEWSLETTER; RECOGNITION BANNER IN SHOW RING (\$100
OR**

MORE); PICTURES TAKEN WITH THE CHAMPIONS (\$250 OR MORE).

WE THANK YOU FOR YOUR SUPPORT!



PENNSYLVANIA ANGUS BREEDERS SHOW ENTRY FORM
July 14th, 15th and 16th

ENTRIES DUE JUNE 20TH

ENTRIES MUST BE COMPLETELY FILLED OUT FOR EASE OF CATALOGING! PLEASE ASSUME YOUR ENTRIES HAVE BEEN ACCEPTED, UNLESS OTHERWISE NOTIFIED. PHONE NUMBER _____

E-mail entries to: Justenuffangus@enter.net and mail your check or

Mail entries to: Jamie Brozman, 354 Townshipline Road, Nazareth, PA 18064

Name of Animal _____ Sex _____
 Registration # _____ Tattoo _____ Date of Birth _____
 Sire _____ Dam _____
 Breeder _____ Owner _____
 Owner Address _____
 AAA Member Code _____
 Both Shows _____ Open Only _____ Jr Only _____ Spotlight _____

Name of Animal _____ Sex _____
 Registration # _____ Tattoo _____ Date of Birth _____
 Sire _____ Dam _____
 Breeder _____ Owner _____
 Owner Address _____
 AAA Member Code _____
 Both Shows _____ Open Only _____ Jr Only _____ Spotlight _____

Name of Animal _____ Sex _____
 Registration # _____ Tattoo _____ Date of Birth _____
 Sire _____ Dam _____
 Breeder _____ Owner _____
 Owner Address _____
 AAA Member Code _____
 Both Shows _____ Open Only _____ Jr Only _____ Spotlight _____

Name of Animal _____ Sex _____
 Registration # _____ Tattoo _____ Date of Birth _____
 Sire _____ Dam _____
 Breeder _____ Owner _____
 Owner Address _____
 AAA Member Code _____
 Both Shows _____ Open Only _____ Jr Only _____ Spotlight _____

Stall me beside: _____

Please feel free to copy this form for additional entries. Entry forms must be completely filled out! ENTRY FEES: both junior and open shows \$30/head; Open only \$30/head; junior show only \$20/head; Cow/Calf \$45/pair – covers calf class too; Spotlight only, none.

REMEMBER, THE DEADLINE IS JUNE 20TH!

2016 PENNSYLVANIA ANGUS BREEDERS SHOW

Rules and Regulations

July 14, 15 & 16

1. All Exhibitors must be members of the PA Angus or Junior Angus Associations. Any member of these Associations is eligible as long as their membership is valid on June 1 preceding the show.
2. **READ CAREFULLY:** All animals must be owned/transferred by **June 20th**. A junior must show his/her own cattle. Out of state juniors may show only PA bred cattle in the junior show. PA resident juniors only in showmanship.
3. All entry forms must be sent to the PA Angus Association no later than June 20th, with appropriate fees.
4. All junior heifers, bulls, and cow/calf pairs are eligible to be shown in the Breeders Show Open Class. The entry fee for heifers and bulls for both shows is a total of \$30/head. Entry fees for cow/calf pairs for both shows is \$45/pair. Steers show in the junior show only and are \$20/head.
5. Entries received after June 21 will be charged double entry fee. Substitutions will be accepted at double entry fee.
6. Each exhibitor must supply his/her own feed, hay and straw (for tie outs). Free bark bedding will be provided in the barn.
7. **All animals must have a legible tattoo in both ears, which corresponds to the registration paper. CHECK YOUR TATTOO BEFORE COMING TO THE SHOW! Exhibitors must bring original registration papers to the show. MAKE SURE YOU HAVE YOUR REGISTRATION PAPERS IN HAND TWO WEEKS BEFORE THE SHOW—copies cannot be used. Tattoos will be checked.**
8. Each exhibitor must keep manure removed from the aisle behind the animals and deposit it at the place designated outside the building. Each exhibitor must clean up his entire tie out area before leaving the show grounds at the completion of the show.
9. All exhibitors and cattle must be in place by 1:00 p.m. on Thursday, July 14th, and will be released when all activities are completed.
10. **THE PA ANGUS ASSOCIATION BOARD OF DIRECTORS VOTED TO FOLLOW THE AMERICAN ANGUS ASSOCIATION RULES CONCERNING COLORING AGENTS: "...no exhibitors, individuals assisting exhibitors or member owners at such show shall be allowed to use any coloring agents, on any animal exhibited." THIS RULE PERTAINS TO SHOWS WHICH ARE SPONSORED BY THE PA ANGUS ASSOCIATION ALSO, WHICH WOULD INCLUDE THIS BREEDERS SHOW.**
11. All blocking chutes must be used in designated areas.
12. **No dogs allowed on the fairgrounds! (Fair Board Policy)**
13. The Show Committee reserves the right to refuse any entry offered and to require the removal from the grounds any exhibit which the Show Committee feels for any reason to deem unfit.
14. The exhibitor assumes all risks for damage or loss either to person or property. It is further expressly understood and agreed between exhibitor and the Huntingdon County Fairgrounds, which the show incurs no liability or obligation to the exhibitor other than to permit the exhibitor to use the buildings or grounds for exhibit.
15. Exhibitors must allow their cattle to be used in judging, showmanship contests or demonstrations if asked to do so.
16. All decisions of the show committee are final.
17. Any or all premiums will be calculated after the show, and will be paid when all bills have been received and paid.
18. Fifty (50) head need to be shown in the Open Show to qualify for premiums from the American Angus Association.
19. Angus steers can be shown by PA Angus Association Junior members only. The Grand Champions and Reserves may be blood typed.
20. Under American Angus Association rules, standard class breaks do not have to be used in dividing classes. Classes will be divided after all the cattle are checked in. The show committee reserves the right to divide divisions based on entry numbers.
21. All vendors must register with the Show Committee prior to the Show.
22. Spotlight Show—eligible heifers for this show had to be purchased on the 2015 or 2016 Finest Female Sale or 2014 or 2015 Angus on Parade Sale.
23. No nurse cows are allowed on the premises.
24. Due to more cattle and the bark situation, the show committee may do stalling assignments. If you have someone you need stalled with, please indicate with entries, or contact Jamie Brozman by June 20th with requests. All attempts will be made to accommodate your requests.

OPEN SHOW CLASSIFICATION
2016 PENNSYLVANIA ANGUS BREEDERS' SHOW
July 14, 15 & 16, 2016

FEMALES

1. Junior heifer calves, calved on or after Jan 1, 2016
2. Late senior heifer calves, calved between Nov 1 and Dec 31, 2015
3. Early senior heifer calves, calved between Sept 1 and Oct 31, 2015
4. Late summer yearling heifers, calved between July 1 and Aug 31, 2015
5. Early summer yearling heifers, calved between May 1 and June 30, 2015
6. April junior yearling heifers, calved between April 1 and 30, 2015
7. March junior yearling heifers, calved between March 1 and 31, 2015
8. Early junior yearling heifers, calved between Jan 1 and Feb 28, 2015
9. Late senior yearling females, calved between Nov 1 and Dec 31, 2014
10. Early senior yearling females, calved between Sept 1 and Oct 31, 2014
11. Cow/Calf classes, cow may be any age—calf must be <280 days born on or after 10-10-15, must be exhibited with either natural or embryo calf (be sure to list all calf info on entry form)
 - Junior Heifer calf champion (class 1)
 - Senior Heifer Calf Champion and Reserve (classes 2,3)
 - Intermediate Champion Heifer and Reserve (classes 4-5)
 - Junior Heifer Champion and reserve (classes 6-8)
 - Senior Female Champion Heifer and reserve (classes 9-10)
 - Grand Champion Heifer and Reserve
 - Cow/Calf Champion and Reserve

BULLS

12. Junior bull calves, calved on or after Jan 1, 2016
13. Late senior bull calves, calved between Nov 1 and Dec 31, 2015
14. Early senior bull calves, calved between Sept 1 and Oct 31, 2015
15. Late summer yearling bulls, calved between July 1 and Aug 31, 2015
16. Early summer yearling bulls, calved between May 1 and June 30, 2015
17. April junior yearling bulls, calved between April 1 and 30, 2015
18. March junior yearling bulls, calved between March 1 and 30, 2015
19. Early junior yearling bulls, calved between Jan 1 and Feb 28, 2015
20. Senior yearling bulls, calved between Sept 1 and Dec 31, 2014
21. Summer yearling bulls, calved between May 1 and Aug 31, 2014
22. Two year old bulls, calved between Jan 1 and Apr 30, 2014
 - Junior bull calf champion and reserve (class 12)
 - Senior Bull Calf Champion and reserve (classes 13-14)
 - Intermediate Bull Champion and reserve (classes 15-16)
 - Junior Bull Champion and reserve (classes 17-19)
 - Senior Champion Bull and reserve (classes 20-22)
 - Grand Champion Bull and reserve

GROUP CLASSES

23. Breeder Six Head. The exhibitor must be the breeder and first owner of the animals exhibited in individual classes. The breeder and first owner must have the same member code. Any sex.
24. Pennsylvania Special: Two head, any age, bred and owned or co-owned by exhibitor.
25. Premier Breeder Award is presented to the breeder who accumulates the most points: 5 pts 1st place; 4 pts 2nd place; 3pts 3rd place; 2 pts 4th place; 1 pt 5th place. Points are given for individual classes only on bulls and heifers. No points for champions or groups or cow/calf classes. In case of ties, sixth place to be counted on a 1 pt basis. This is open show only. The same parameters are used for the junior show.
26. Premier Exhibitor award, computed from winnings: 3pts 1st place; 2 pts 2nd place; 1 pt 3rd place. 3 points for Grand Champion and 2 points for Reserve Grand Champion.

JUNIOR SHOW CLASSIFICATION

All junior events will take place on Thursday and Friday. All junior cattle are encouraged to also be entered in the open show on Saturday. Please make sure you have the cattle at the show by 1:00 p.m. check in time on Thursday.

RULES FOR JUNIOR SHOW:

1. **Ownership/transfer and entry deadlines will be June 20th, along with membership deadline.**
1. **A junior must show his/her own cattle.**
2. **Out of state juniors may show only PA bred cattle in junior show.**
3. **PA resident juniors in showmanship only.**
4. **Any PA junior Angus member may participate in Showmanship, you are permitted to use an animal other than your own. (Approved 10/5/12 PA Angus BOD)**
5. **Ages of juniors showing in Junior show must correspond with National Junior Angus Show rules, except for Showmanship. Junior must be 8 years of age on January 1, 2016.**

JUNIOR COW/CALF CLASS—Cow may be any age, calf must <280 days born on or after 10-10-2016 and must be a bred and owned calf—the pair must be in the junior name only. Calf must have its own registration paper. Calf may also be shown in bred and owned heifer or bull show. Grand Champion and Reserve Cow/Calf.

JUNIOR BRED AND OWNED BULL SHOW—Junior bred and owned bulls calved on or after January 1, 2015, shown by class, no divisions. Bulls born before 1/1/16 must be shown with a nose lead. Grand and Reserve Grand Champion bred and owned bull.

JUNIOR REGISTERED ANGUS STEER SHOW—steers born after January 1, 2015. Steers will be weighed and shown by age.

JUNIOR BRED AND OWNED HEIFER SHOW—Heifers calved after September 1, 2014 and bred by the junior. Heifers will be shown by class and division, beginning with the youngest. Junior heifer calf champion and reserve; senior heifer calf champion and reserve; intermediate champion and reserve; junior champion and reserve; senior champion and reserve, and Grand Champion Heifer and reserve.

JUNIOR SPOTLIGHT SHOW—Heifers purchased at the 2015 & 2016 Finest Female Sale or 2014 or 2015 Angus on Parade Sale and calved after September 1, 2014.


JUNIOR OWNED HEIFER SHOW—Heifers purchased by a junior member and in that juniors name only, and calved after September 1, 2014. Heifers will show by class and division, beginning with the youngest. Same divisions as listed in bred and owned heifer show.

JUNIOR SHOWMANSHIP—All juniors who sign up will be divided into different age groups at the discretion of the show committee. Each participant will receive a gift compliment of Frey Show supply. The Grand Champion and Reserve will be selected with special awards! Ages will be divided evenly at the show.

JUNIOR PREMIER BREEDER will be awarded at the conclusion of the Junior shows.

BREEDERS SHOW HEALTH REQUIREMENTS

Recommendations for Fair Animal Health Requirements:

1. A Certificate of Veterinary Inspection (CVI) issued after May 1, 2016.
2. All animals must be free of infectious and contagious diseases and a statement of this should be written on the CVI.
3. Individual official animal identification. Official ID will have a US shield  and includes:
 - A USDA-issued National Uniform Eartagging System (NUES) tag; or
 - A 15-digit Animal Identification Number eartag starting with “840” (including RFID) or
 - Other official identification approved by USDA. (Brands and breed registrations with tattoos are not acceptable).
4. A current rabies vaccination administered by a licensed veterinarian is recommended for animals 3 months of age and older (market cattle are exempt). (revised 2/2/2016)

PENNSYLVANIA FARM SUPPLIERS & RESOURCES

717-548-1351
Fax 717-548-0376

1664 Furniss Rd.
Drumore, PA 17518

FREY'S LIVESTOCK SUPPLY

*Show Supplies • Livestock Trailers
Sharpening & Repair • Show Feeds
Club Calves • Registered Angus Cattle*

www.freysupply.com email: ffrey@freysupply.com



Gettysburg, PA

1-800-649-SHOW

heartfeltlivestocksupply.com

heartfeltsupply@gmail.com



JDH Cattle Company

Registered Angus Cattle



Custom Fitting Show/Sale Cattle
Herd Consulting-Sale Ring Service
Livestock Hauling • Hoof Trimming Service
Dealer For Vita Farm & Sure Champ



John & JoAnn D. Hausner
5550 Pine Hill Rd. • Dover, PA 17315
717-292-3053 Home • 717-968-0971 Cell



Mike Shanahan

(518) 598-8869

- Cattle Photography & Videography
- Marketing/Advertising Consultant
- Auction Planning & Ring Service
- General Marketing & Consulting
- Purchasing Agent
- Website Management

FAX (646) 277-1161

P.O. Box 338

Ghent, NY 12075

mike@cattlepromotions.com

www.cattlepromotions.com

GENETIC VISIONS, LLC

Cattle Reproduction & Embryo Transfer

James F. Evans, VMD

3466 Breezy Point Road, McConnellsburg, PA 17233

717-485-0532/Fax 717-485-0539

Quality Livestock Equipment

372 Puseyville Road, Quarryville, PA 17566

Office: 717.786.2146
Fax: 717.786.7509
Cell: 717.801.6685
freybrothers@epix.net

Visit us on the web at: www.freybrothersinc.com

EASTERN STATES LIVESTOCK SYSTEMS

Office: (800) 242-3240
Cell: (814) 977-0848
Home: (814) 735-4554

1563 Oak Grove Road
Breezewood, PA 15533

Frank "Butch" Otto

**ACCELERATED GENETICS
IS YOUR TRUSTED SOURCE
FOR ALL BEEF GENETICS.**

ROBERT WHITACRE
REGIONAL BEEF SPECIALIST
540-247-4282
RWHITACRE@ACCELGEN.COM



800-451-9275 | WWW.ACCELGEN.COM

NO BULL TOO BIG OR NASTY ZIMMERMAN'S CUSTOM FREEZING

Semen Freezing Since 1983

Semen Fertility Evaluations

www.semenfreezing.com

Harry Zimmerman Ph. 717-355-2048
131 Redwell Rd. Cell 717-940-1430
New Holland, PA 17557 Fax 717-354-9372

When It Comes To Marketing
We Don't Sit Around Waiting For
The Cows To Come Home
Call Us For Results



Auctioneer - Sale Management - Private Treaty Sales
Photography/Video - Genetic Consulting



Ken Brubaker
540/908-5799
ken@brubakersales.com
www.brubakersales.com



PENNSYLVANIA ANGUS ASSOCIATION BREEDERS



SUNRISE CLUB CALVES

Paul & Beth Wingard
(814) 782-3992

www.clubcalves.com/sunriseclubcalves.htm
6667 Rt. 322 Shipperville, PA 16254
Visitors Always Welcome

Mt. Pisgah Angus

Registered Angus Cattle

1603 Pisgah Rd.
Troy, PA 16947

570-297-4206
Fax 570-297-9910



KAREN GILLILAND

E-mail: kgquilter@hotmail.com

Breeding Angus Cattle for a Century! PENN STATE

Penn State University - Beef Cattle Center
142 Orchard Rd. - University Park, PA 16802

Beef Cattle Center: 814.863.0831

Wendall Landis (c) 814.280.7611 email: wlandis@psu.edu

Mitch Stephens, Assistant Manager

814.762.4762 email: mjs5230@psu.edu



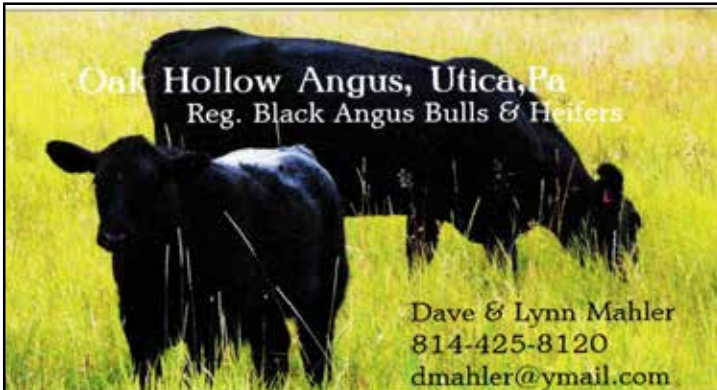
Visitors welcome to our farm and campus at all times!



McKean Family
193 East Zahniser Road
Mercer, PA 16137
(724) 475-4450

peggymckean@windstream.net

Annual Bull Sale every APRIL.
watch for details!



HJM Cattle Company



Reg. Angus, Maine - Anjou & Club Calves
Kevin, Karen Fuls and Family
C: 610-389-5289
Heather, Keith Fessler and Family
H: 610-693-5009
Robesonia, PA 19551

EBONY FARM – REGISTERED ANGUS

Featuring

“Whitestone Conviction 4010” AAA # 17852403

Lance & Sheila Kauf
111 Manuel Road
West Sunbury, Pa 16061

bootskauf@zoominternet.net 724-894-2392

WORK LAND & CATTLE
2 WORK PARKWAY
UNIONTOWN, PA 15401



WATCH FOR OUR
ANNUAL PRODUCTION
SALE

Bill & Billy Work • Bob & Pam Work: 724-438-1703

Keith & Linda Rooker: 412-691-4913

Kevin Rooker: 724-322-1576 • Kevinrooker@yahoo.com

www.WorkCattle.com

Lisnageer Farm

789 Cedar Knoll Rd.
Coatesville, PA 19320
610.383.9453
Bill & Cheryl Fairbairn



Registered Angus Cattle
“Butts and Guts on Grass”



HERR
ANGUS FARMS

Black Angus Freezer Beef

Dennis & Dottie Byrne

25 Airport Road
Nottingham, PA 19362

Phone: (610) 932-5977
Fax: (610) 932-6017

Email: dennis.byrne@herrs.com



PENNSYLVANIA ANGUS ASSOCIATION BREEDERS



KNAPP TIME FARM

MICHAEL & DEBBIE KNAPP

258 School Road

Hooversville, PA 15936

(814) 754-9968

QUALITY HOME GROWN PRODUCTS



A Historical Herd
Registered Angus Cattle
AHIR • Certified • Accredited
www.errer.com

Bob Hay Farm Manager

Owned and operated by
Riggs Industries, Inc.

499 Riggs Street
Friedens, PA 15541
Phone: (814) 445-4440
Fax: (814) 444-1302
Home: (814) 445-2008
Cell: (814) 442-5965
Email: bkh@lseci.com



REGISTERED ANGUS

Larry & Barbara Weaver

717-354-7477

641 Spruce Road

Cell: 717-468-1553

New Holland, PA 17557 Email: weaverland@frontiernet.net

COLE'S ANGUS



REGISTERED ANGUS SINCE 1959

57 LANIK ROAD
BENTLEYVILLE, PA. 15314

Phone: 724-258-2394

E-MAIL: kayboo2@yahoo.com

BREEDING ONLY TO THE TOP A-I SIRES

CERTIFIED • ACCREDITED HERD



Registered Angus Sales
Since 1984

Oak Hill Angus Farm Oren and Beth Smith

37 Old Trail Rd.
Avella, PA 15312

Phone: 724 345-3589
email: ohangus@pulsenet.com

ENDLESS MOUNTAINS ANGUS FARM



Registered Black Angus
Gene & Valerie Trowbridge and Family

570-833-4482

emangusfarm@frontier.com

6290 State Route 3001
Meshoppen, PA 18630

YOUR BUSINESS CARD

AD HERE

FOR ONE YEAR

\$100

CONTACT THE SECRETARY!

Quiet Heart Farm



Registered Black Angus

Bill & Eshton Ritenour
724-455-8309 Barn
507-384-2870 Cell

P.O. Box 47
Melcroft, PA 15462

WindSwept Angus LLC

Premium Grass Fed - Grass Finished Beef

Steven Semkowicz

203-803-7809

semkowicz@hotmail.com

Cattle for Sale

www.windsweptangus.com



OCTORARO ANGUS



Pure breeder type Angus
Seed saver genetics for over 45 years

Samuel J. Wylie, III & Sherrill
2336 Adams Run Road
New Paris, PA 15554
814-839-0116
Cell: 814-889-9196
octoraro@nb.net
www.octoraroangus.com

PENNSYLVANIA ANGUS ASSOCIATION BREEDERS



MARGARET H. DUPREY
TIM FITZGERALD
Cattle Manager

610 . 869 . 9455
Cell 484 . 368 . 7456
Fax 610 . 869 . 8279
Email fitzatkf@aol.com

142 Wilson Road
West Grove, PA 19390

Em Brook Angus

Em Brook Farm



Rick Emerick
Richie Emerick
Ryan Emerick

2970 Helixville Road
Schellsburg, PA 15559
814.733.4552

embrook@embarqmail.com

www.embrookangus.com



Gene Nolt
717-669-7296

Ryan Nolt
717-808-9065

**REGISTERED
ANGUS**

143 KURTZ RD NEW HOLLAND, PA 17557



Jamie, Jerry, Ethan &
Olivia Brozman
Ned & Linda Hower

E-mail:
JustEnuffAngus@gmail.com

354 Townshipline Rd. Nazareth, PA 18064
Home (610)-837-3866 Cell (484)221-3455
Registered Angus Cattle Tame Show Calves
Website/Facebook – www.justenuffangus.com

**YOUR BUSINESS CARD
AD HERE
FOR ONE YEAR
\$100**

CONTACT THE SECRETARY!

Mitchell Farms
80 Martin Drive
Reinholds, PA 17569

(H) 717-336-5459
(C) 484-332-3965

Matthew & Jeff Mitchell

mitchellfarms@dejazzd.com

mnm5237@psu.edu



30 Day Cattle Blood Pregnancy Test

- Rapid results
- Safe for embryo
- Accurate
- Inexpensive
- Less Invasive
- Bio-secure

Call for blood sampling kit: 717-354-2178
www.precisiond.com

**NICHOLS
GRAND VIEW FARM**

Registered Angus Cattle

814-684-5790

gvfkrn@yahoo.com

Donnie 814-934-7047 Karen 814-934-4977 John 814-934-9457 William 814-207-6730

5415 Nichols Road, Tyrone, PA 16686



LOWRY'S FARM
REGISTERED ANGUS
290 LYNN PORTAL ROAD
WASHINGTON, PA 15301

JAMES LOWRY
OWNER

(724) 345- 3716
JLOWRY290@VERIZON.NET



GND Angus

Gerald &
Denise Segelstrom

Registered Angus Cattle

1035 McGuffey Road
West Alexander, PA 15376

724-663-0125 • gndangus@verizon.net